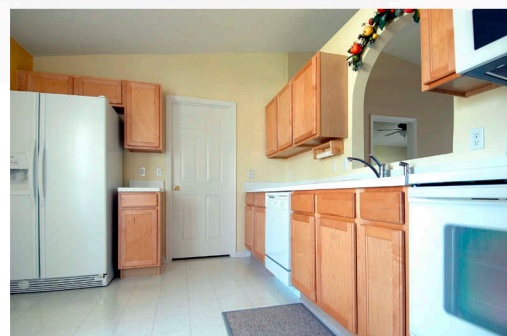




5090 SPINET DRIVE - MELBOURNE, FLORIDA 32940

Main Features Include:

- * Beautiful Like New Home Built in 2003
- * Contemporary Style One Story Design
- * Approx. 1264 Square Feet Under Air (2000 Total)
- * Three Bedrooms * Two Full Bath
- * Situated on Approx .19 Acres of Land (Faces North)
- * Gourmet Kitchen Features Beautiful Maple Cabinetry and All Like New Appliances Included
- * Beautiful Master Suite has Large Walk-in Closet, Volume Ceilings, Separate Garden Tub & Shower and Private Water Closet
- * Community Amenities Include Tennis Courts, Soccer Field, Basketball Court, Baseball Field and a Pavilion with Picnic Area



Don't Miss This Beautiful Home on www.c21camelotrealty.com

Nick Farinella, Realtor
C21 Camelot Realty, Inc
callnicktoday@mindspring.com
c21camelotrealty.com

Office: 321.259.5280
Direct: 321.255.9167
Fax: 321.255.9652

